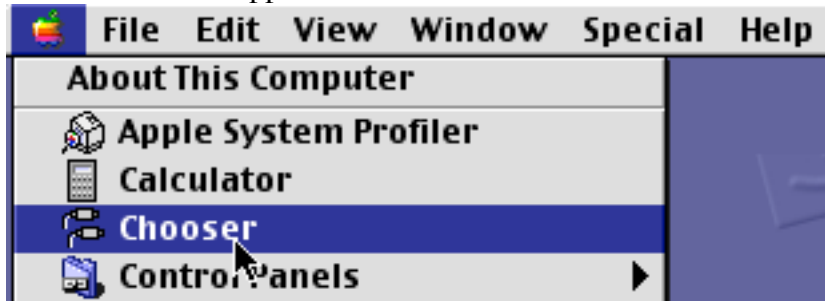
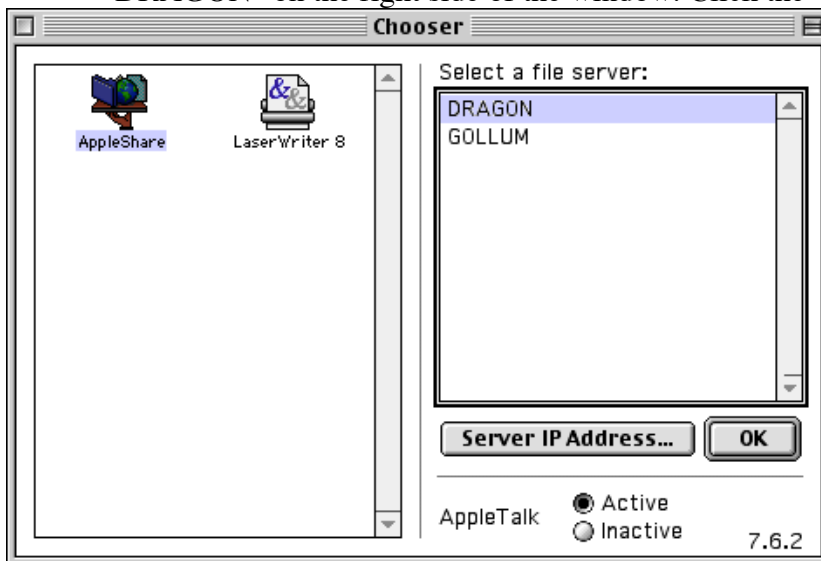


How to Access Your Kalamazoo College Network Drive from a Macintosh using Mac OS 9

1. Click the Apple and select "Chooser"



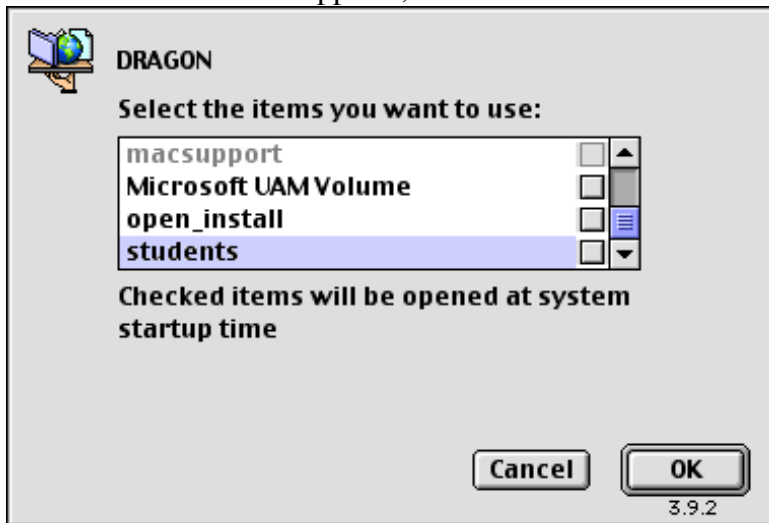
2. In the Chooser window that appears, click "AppleShare" on the left side, then select "DRAGON" on the right side of the window. Click the "OK" button.



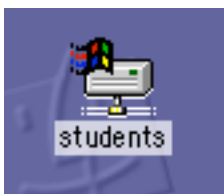
3. In the window that appears, enter your username and KNET password in the appropriate fields, and click the "Connect" button.



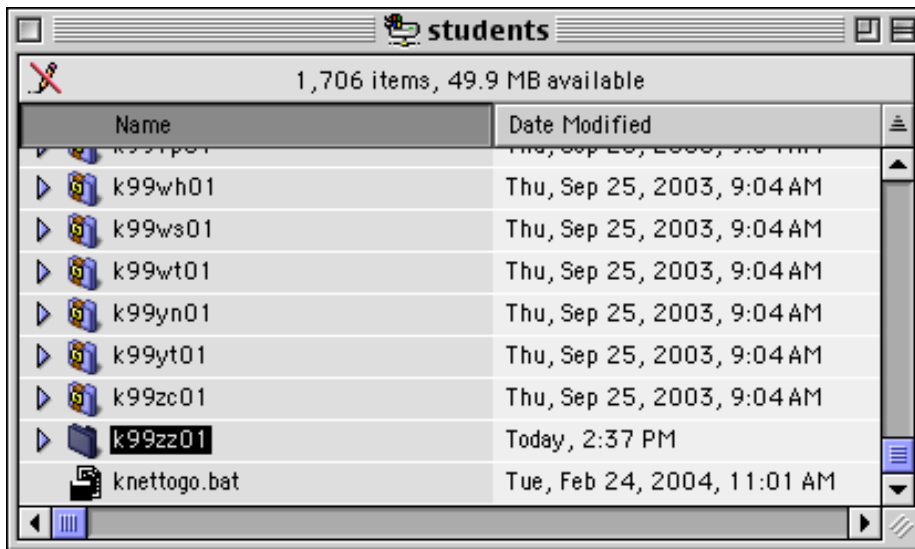
4. In the window that appears, choose "students" from the list and click the "OK" button.



5. A volume called "students" will mount on your desktop.



6. Double click the "students" icon that appeared in step 5. A Finder window opens, showing you a list of folders: one for each student's network drive space. The folder with your username is your network drive space, and the only folder you will be able to access.



OPTIONAL: for easy access later, you may wish to make an alias to your network drive space. Select the folder with your username, then click the "File" menu and choose "Make Alias."